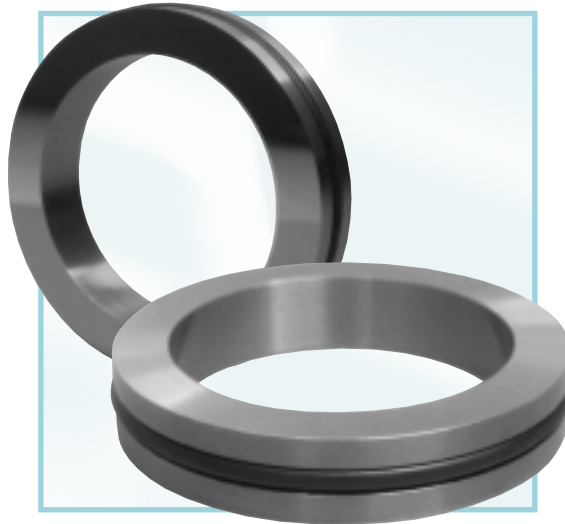




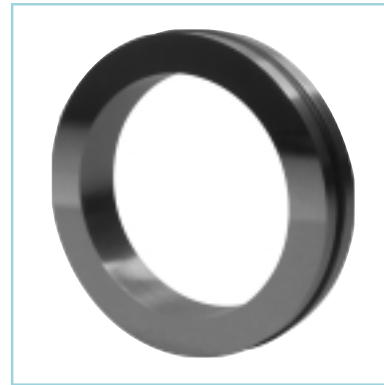
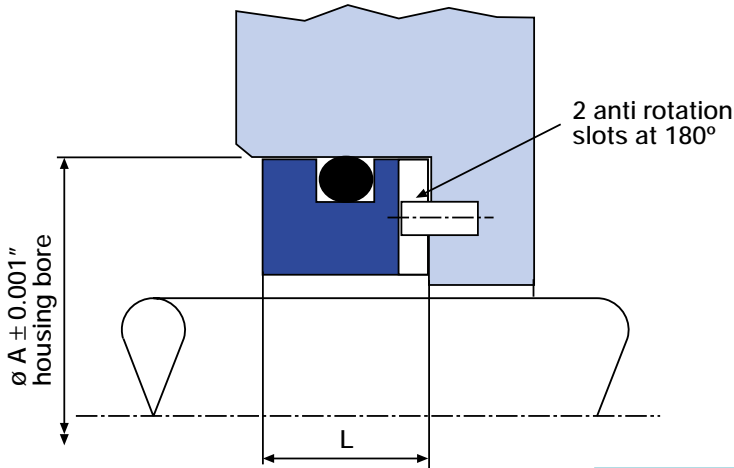
ENVIRONMENTAL TECHNOLOGY

## CO-SEAT™ Stationary 'O' Ring Mounted Seats



- 'O' RING MOUNTED SEATS
- INVENTORIED IN SOLID  
TUNGSTEN CARBIDE &  
SILICON CARBIDE
- AVAILABLE IN SIZES  
1.000" - 5.500"

# CO-SEAT™ - Stationary 'O' Ring Mounted Seats



- Most Seats listed are available in solid silicon carbide and/or tungsten carbide. (Check inventory levels or lead time before ordering).
- Supplied with a Viton® 'o' ring as standard.
- For larger seats please contact the AESSEAL® Technical Department.
- Sizes and materials not listed are available to order.

For other AESSEAL® seats and basic component seals see the SAI™, CS™, NCE™ and stationary seat range brochure L-UK/US-SAICSNCESEAT. This and other literature is available to order by contacting the Marketing Department at [marketing@aesseal.com](mailto:marketing@aesseal.com) or can be downloaded by visiting our website at [www.aesseal.com](http://www.aesseal.com).

Shaft Size	A	L	O-ring Size	Anti-Rot Slot Width	Anti-Rot Slot Depth
1.000	1.625	0.437	220	0.177	0.093
1.125	1.750	0.437	222	0.177	0.093
1.250	1.875	0.437	223	0.177	0.093
1.375	2.000	0.437	224	0.177	0.093
1.375* (Durco)	2.125	0.469	225	0.177	0.093
1.500	2.125	0.437	225	0.177	0.093
1.625	2.375	0.500	227	0.177	0.093
1.750	2.500	0.500	228	0.177	0.093
1.875	2.625	0.500	229	0.177	0.093
2.000	2.750	0.500	230	0.177	0.093
2.125	3.000	0.562	232	0.177	0.093
2.250	3.125	0.562	233	0.177	0.093
2.375	3.250	0.562	234	0.177	0.093
2.500	3.375	0.562	235	0.177	0.093
2.625	3.375	0.625	235	0.216	0.100
2.625** (Durco)	3.625	0.625	237	0.216	0.100
2.750	3.500	0.625	236	0.216	0.100
2.875	3.750	0.625	238	0.216	0.100
3.000	3.875	0.625	239	0.216	0.100
3.125	4.000	0.783	240	0.216	0.145
3.250	4.125	0.783	241	0.216	0.145
3.500	4.375	0.783	243	0.216	0.145
3.750	4.625	0.783	245	0.216	0.145
4.000	4.875	0.783	247	0.216	0.145
4.500	5.500	0.783	252	0.216	0.145
5.000	6.000	0.783	256	0.216	0.145
5.500	6.500	0.783	259	0.216	0.145

\* Fits Flowserve Mk 3 Group 1K gland follower & FMI box.  
 \*\*Fits Flowserve Mk 2 & Mk 3 Group 3 gland follower & FMI box.  
 (Please note \* and \*\* conform to S07 stationary seat dimensions)

THIS DOCUMENT IS DESIGNED TO PROVIDE DIMENSIONAL INFORMATION AND AN INDICATION OF AVAILABILITY. FOR FURTHER INFORMATION AND SAFE OPERATING LIMITS CONTACT OUR TECHNICAL SPECIALISTS AT THE LOCATIONS BELOW.



INVESTOR IN PEOPLE

USE DOUBLE MECHANICAL SEALS WITH HAZARDOUS PRODUCTS. ALWAYS TAKE SAFETY PRECAUTIONS:

- GUARD YOUR EQUIPMENT
- WEAR PROTECTIVE CLOTHING



WARNING

AESSEAL plc  
 Mill Close  
 Templeborough  
 Rotherham  
 S60 1BZ  
 United Kingdom

Telephone:  
 Fax:  
 E-mail:  
 Internet:

Copyright © AESSEAL plc 2002

WINNER OF THE  
 NATWEST  
 SUNDAY TIMES  
 COMPANY OF  
 TOMORROW  
 AWARD

+44 (0) 1709 369966  
 +44 (0) 1709 720788  
[seals@aesseal.com](mailto:seals@aesseal.com)  
<http://www.aesseal.com>

Distributed by:

USA Sales & Technical advice:  
 AESSEAL Inc.  
 10231 Cogdill Road  
 Suite 105  
 Knoxville, TN 37932  
 USA

Telephone: 865 531 0192  
 Fax: 865 531 0571

ALL SIZES ARE SUBJECT TO MANUFACTURING TOLERANCES. WE RESERVE THE RIGHT TO MODIFY SPECIFICATIONS AT ANY TIME.

CO-SEAT™ is a Trademark of AESSEAL plc  
 Registered Trademarks: AESSEAL® - AESSEAL plc  
 Viton® - DuPont Dow Elastomers